

Divergence-free virtual element method for Stokes and Navier-Stokes problems

F.Dassi

Department of Mathematics and Applications
University of Milano - Bicocca

a joint work with

L. Beirão da Veiga and G. Vacca

POEMS 2019
Marseille - France
April 29th - May 3rd 2019



Divergence-free virtual element method
for Stokes and Navier-Stokes problems

Divergence-free virtual element method
for Stokes and Navier-Stokes problems

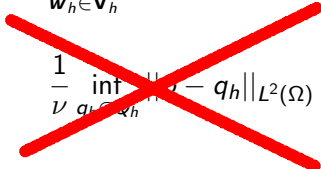
Divergence-free condition

- standard Finite Element do not have it!
- pressure-robust method *only* in a weak sense, for instance A. Linke *et al.* (2017).

$$\|\nabla(\mathbf{u} - \mathbf{u}_h)\|_{L^2(\Omega)} \lesssim \inf_{\mathbf{w}_h \in \mathbf{V}_h} \|\nabla(\mathbf{u} - \mathbf{w}_h)\|_{L^2(\Omega)} + \frac{1}{\nu} \inf_{q_h \in Q_h} \|p - q_h\|_{L^2(\Omega)}$$

Divergence-free condition

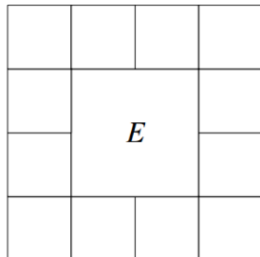
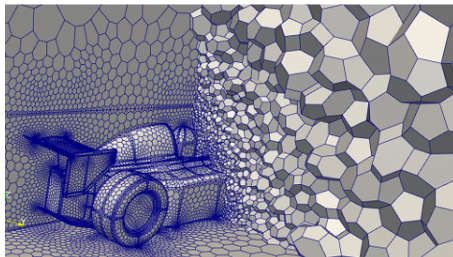
- standard Finite Element do not have it!
- pressure-robust method *only* in a weak sense, for instance A. Linke *et al.* (2017).

$$\|\nabla(\mathbf{u} - \mathbf{u}_h)\|_{L^2(\Omega)} \lesssim \inf_{\mathbf{w}_h \in \mathbf{V}_h} \|\nabla(\mathbf{u} - \mathbf{w}_h)\|_{L^2(\Omega)} + \frac{1}{\nu} \inf_{q_h \in Q_h} \|\mathbf{u} - q_h\|_{L^2(\Omega)}$$


Divergence-free **virtual element method**
for Stokes and Navier-Stokes problems

What is the Virtual Element Method (VEM)?

A generalization of the Finite Element Method introduced in 2013

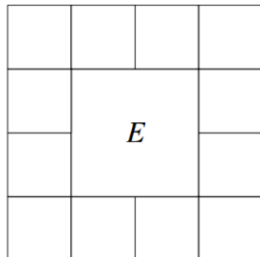
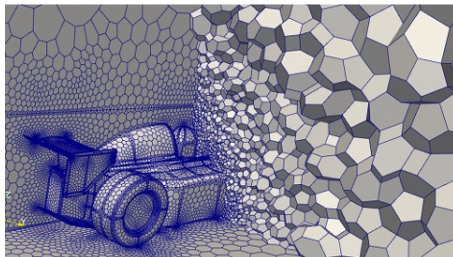


- general **polygonal** and **polyhedral** meshes (also non convex)
- additional interesting **features** and **properties**

"Basic principles of virtual element method"
L. Beirão da Veiga, F. Brezzi, A. Cangiani, G. Manzini, L. D. Marini and A. Russo (2013)

What is the Virtual Element Method (VEM)?

A generalization of the Finite Element Method introduced in 2013



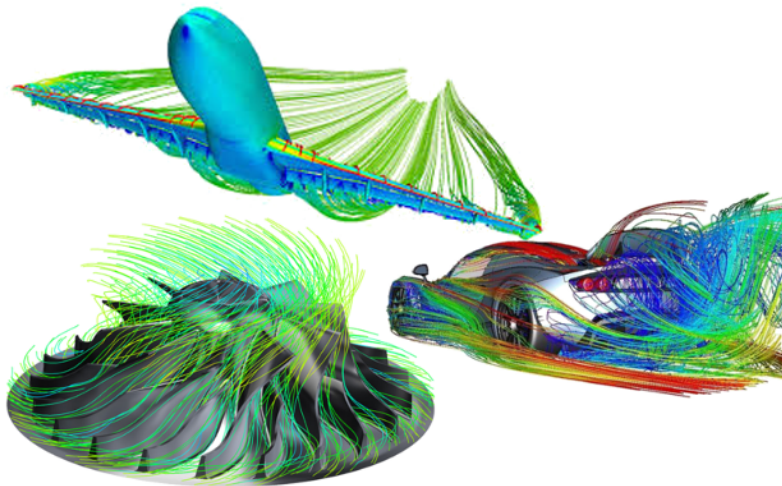
- general **polygonal** and **polyhedral** meshes (also non convex)
- **additional interesting features and properties**

"Basic principles of virtual element method"

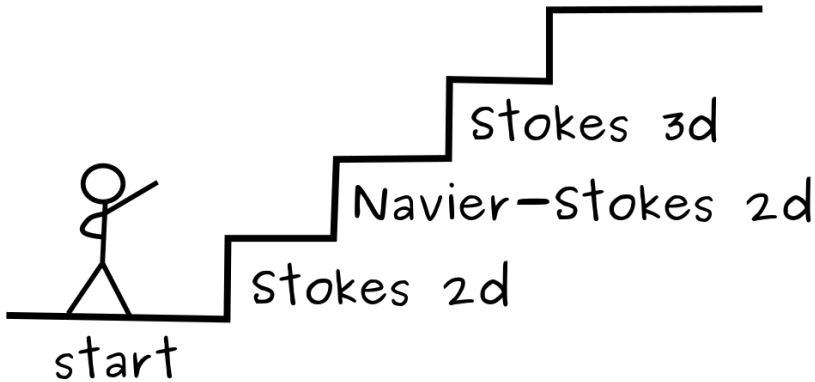
L. Beirão da Veiga, F. Brezzi, A. Cangiani, G. Manzini, L. D. Marini and A. Russo (2013)

Divergence-free virtual element method
for Stokes and Navier-Stokes problems

Stokes and Navier-Stokes problems



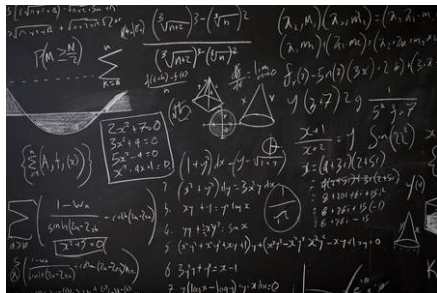
Navier-Stokes 3d



Talk outline

- 1 Problem definition
- 2 VEM spaces
 - Velocity field virtual space
 - Pressure virtual space
- 3 Problem discretization
- 4 Numerical examples
- 5 Conclusions

Problem definition



Stokes problem - continuous formulation

We search for a velocity field \mathbf{u} and pressure p , such that

$$\begin{cases} -\nu \Delta \mathbf{u} - \nabla p = \mathbf{f} & \text{in } \Omega \\ \operatorname{div}(\mathbf{u}) = 0 & \text{in } \Omega \\ \mathbf{u} = 0 & \text{on } \partial\Omega \end{cases}$$

where

- Ω be a simply connected domain in \mathbb{R}^2
- $\mathbf{f} \in [L^2(\Omega)]^2$

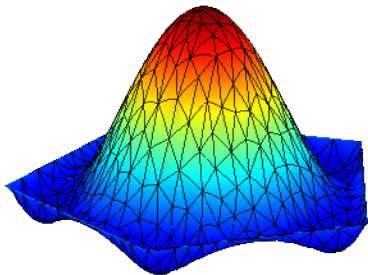
Stokes problem - variational formulation

$$\left\{ \begin{array}{l} \text{find } (\mathbf{u}, p) \in \mathbf{V}_0(\Omega) \times Q(\Omega) \text{ such that:} \\ \int_{\Omega} \nu \nabla \mathbf{u} : \nabla \mathbf{v} \, d\Omega + \int_{\Omega} \operatorname{div}(\mathbf{v}) p \, d\Omega = \int_{\Omega} \mathbf{f} \cdot \mathbf{v} \, d\Omega \quad \forall \mathbf{v} \in \mathbf{V}_0(\Omega) \\ \int_{\Omega} \operatorname{div}(\mathbf{u}) q \, d\Omega = 0 \quad \forall q \in Q(\Omega) \end{array} \right.$$

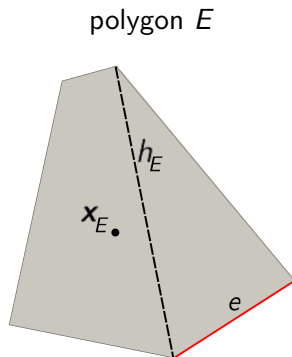
$$\mathbf{V}_0(\Omega) := \{ \mathbf{v} \in [H^1(\Omega)]^2 : \mathbf{v} = 0 \text{ on } \partial\Omega \}$$

$$Q(\Omega) := \left\{ q \in L^2(\Omega) : \int_{\Omega} q \, d\Omega = 0 \right\}$$

VEM spaces



Notation for polygons



$$|E| = \text{area}$$

Notation for 2d monomials

Let $E \subset \mathbb{R}^2$, $k \in \mathbb{N} \setminus \{0\}$ and $\alpha = (\alpha_1, \alpha_2)$ be a multi-index, we define the **scaled monomials**

$$m_\alpha := \left(\frac{x - x_E}{h_E} \right)^{\alpha_1} \left(\frac{y - y_E}{h_E} \right)^{\alpha_2}$$

Notation for 2d monomials

Let $E \subset \mathbb{R}^2$, $k \in \mathbb{N} \setminus \{0\}$ and $\alpha = (\alpha_1, \alpha_2)$ be a multi-index, we define the **scaled monomials**

$$m_\alpha := \left(\frac{x - x_E}{h_E} \right)^{\alpha_1} \left(\frac{y - y_E}{h_E} \right)^{\alpha_2}$$

and the **vectorial scaled monomials**

$$\mathbf{m}_\alpha^1 = \begin{bmatrix} m_\alpha \\ 0 \end{bmatrix}, \quad \mathbf{m}_\alpha^2 = \begin{bmatrix} 0 \\ m_\alpha \end{bmatrix} \quad \text{and} \quad \mathbf{m}^\perp = \begin{bmatrix} m_{(0,1)} \\ -m_{(1,0)} \end{bmatrix}$$

Notation for 2d monomials

Let $E \subset \mathbb{R}^2$, $k \in \mathbb{N} \setminus \{0\}$ and $\alpha = (\alpha_1, \alpha_2)$ be a multi-index, we define the **scaled monomials**

$$m_\alpha := \left(\frac{x - x_E}{h_E} \right)^{\alpha_1} \left(\frac{y - y_E}{h_E} \right)^{\alpha_2}$$

and the **vectorial scaled monomials**

$$\mathbf{m}_\alpha^1 = \begin{bmatrix} m_\alpha \\ 0 \end{bmatrix}, \quad \mathbf{m}_\alpha^2 = \begin{bmatrix} 0 \\ m_\alpha \end{bmatrix} \quad \text{and} \quad \mathbf{m}^\perp = \begin{bmatrix} m_{(0,1)} \\ -m_{(1,0)} \end{bmatrix}$$

- $\{m_\alpha\}$ is a basis of $\mathbb{P}_k(E)$
- $\{\mathbf{m}_\alpha^i\}$ is a basis of $[\mathbb{P}_k(E)]^2$

Notation for 2d monomials

Let $E \subset \mathbb{R}^2$, $k \in \mathbb{N} \setminus \{0\}$ and $\alpha = (\alpha_1, \alpha_2)$ be a multi-index, we define the **scaled monomials**

$$m_\alpha := \left(\frac{x - x_E}{h_E} \right)^{\alpha_1} \left(\frac{y - y_E}{h_E} \right)^{\alpha_2}$$

and the **vectorial scaled monomials**

$$\mathbf{m}_\alpha^1 = \begin{bmatrix} m_\alpha \\ 0 \end{bmatrix}, \quad \mathbf{m}_\alpha^2 = \begin{bmatrix} 0 \\ m_\alpha \end{bmatrix} \quad \text{and} \quad \mathbf{m}^\perp = \begin{bmatrix} m_{(0,1)} \\ -m_{(1,0)} \end{bmatrix}$$

- $\{m_\alpha\}$ is a basis of $\mathbb{P}_k(E)$
- $\{\mathbf{m}_\alpha^i\}$ is a basis of $[\mathbb{P}_k(E)]^2$

3d case is analogous

Polynomial decomposition

It is **essential** the following property

$$[\mathbb{P}_k(E)]^2 = \nabla\mathbb{P}_{k+1}(E) \oplus \mathbf{x}^\perp\mathbb{P}_{k-1}(E)$$

where $\mathbf{x}^\perp := (y, -x)^t$

Polynomial decomposition

It is **essential** the following property

$$[\mathbb{P}_k(E)]^2 = \nabla \mathbb{P}_{k+1}(E) \oplus \mathbf{x}^\perp \mathbb{P}_{k-1}(E)$$

where $\mathbf{x}^\perp := (y, -x)^t$

Then,

$$\forall \mathbf{q}_k \in [\mathbb{P}_k(E)]^2 \quad \exists! q_{k+1} \in \mathbb{P}_{k+1}(E) \setminus \mathbb{R}, \quad p_{k-1} \in \mathbb{P}_{k-1}(E)$$

such that

$$\mathbf{q}_k = \nabla q_{k+1} + \mathbf{x}^\perp p_{k-1}$$

Polynomial decomposition

It is **essential** the following property

$$[\mathbb{P}_k(E)]^2 = \nabla\mathbb{P}_{k+1}(E) \oplus \mathbf{x}^\perp\mathbb{P}_{k-1}(E)$$

where $\mathbf{x}^\perp := (y, -x)^t$

Then,

$$\forall \mathbf{q}_k \in [\mathbb{P}_k(E)]^2 \quad \exists! \mathbf{q}_{k+1} \in \mathbb{P}_{k+1}(E) \setminus \mathbb{R}, \quad p_{k-1} \in \mathbb{P}_{k-1}(E)$$

such that



$$\mathbf{q}_k = \nabla \mathbf{q}_{k+1} + \mathbf{x}^\perp p_{k-1}$$



Polynomial decomposition

It is **essential** the following property

$$[\mathbb{P}_k(E)]^2 = \nabla\mathbb{P}_{k+1}(E) \oplus \mathbf{x}^\perp\mathbb{P}_{k-1}(E)$$

where $\mathbf{x}^\perp := (y, -x)^t$

Then,

$$\forall \mathbf{q}_k \in [\mathbb{P}_k(E)]^2 \quad \exists! \mathbf{q}_{k+1} \in \mathbb{P}_{k+1}(E) \setminus \mathbb{R}, \quad p_{k-1} \in \mathbb{P}_{k-1}(E)$$

such that

$$\mathbf{q}_k = \nabla \mathbf{q}_{k+1} + \mathbf{x}^\perp p_{k-1}$$

We found a recipe for m_α^i !!



Polynomial decomposition

It is **essential** the following property

$$[\mathbb{P}_k(E)]^2 = \nabla \mathbb{P}_{k+1}(E) \oplus \mathbf{x}^\perp \mathbb{P}_{k-1}(E)$$

where $\mathbf{x}^\perp := (y, -x)^t$

Then,

$$\forall \mathbf{q}_k \in [\mathbb{P}_k(E)]^2 \quad \exists! \mathbf{q}_{k+1} \in \mathbb{P}_{k+1}(E)$$

such that

$$\mathbf{q}_k = \nabla \mathbf{q}_{k+1} + \mathbf{x}^\perp p_{k-1}$$

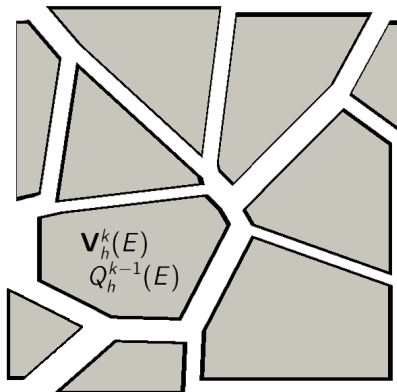
We found a recipe for m_α^i !!

**3d case is
analogous**



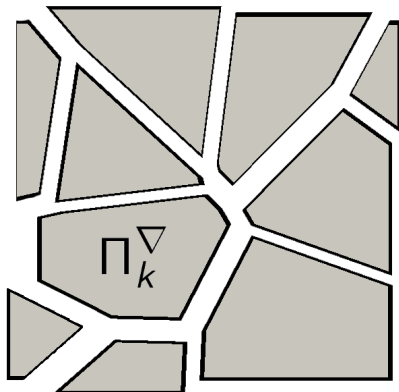
VEM space definition - the plan

- VEM local spaces



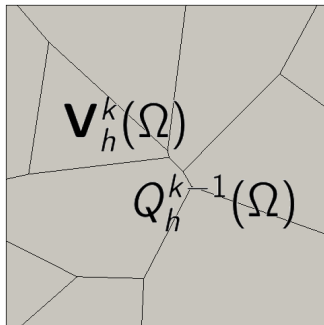
VEM space definition - the plan

- VEM local spaces
- local projection operators



VEM space definition - the plan

- VEM local spaces
- local projection operators
- glue spaces



Velocity field virtual space

$$\mathbf{V}_h^k(E) := \left\{ \mathbf{v}_h \in [H^1(E) \cap C^0(E)]^2 : \mathbf{v}_h|_e \in [\mathbb{P}_k(e)]^2 \forall e \in \partial E, \right. \\ \left. -\Delta \mathbf{v}_h + \nabla s \in [\mathbb{P}_{k-2}(E)]^2, s \in L_0^2(E), \right. \\ \left. \operatorname{div}(\mathbf{v}_h) \in \mathbb{P}_{k-1}(E) \right\}$$

Velocity field virtual space

$$\mathbf{V}_h^k(E) := \left\{ \mathbf{v}_h \in [H^1(E) \cap C^0(E)]^2 : \mathbf{v}_h|_e \in [\mathbb{P}_k(e)]^2 \forall e \in \partial E, \right. \\ \left. -\Delta \mathbf{v}_h + \nabla s \in [\mathbb{P}_{k-2}(E)]^2, s \in L_0^2(E), \right. \\ \left. \operatorname{div}(\mathbf{v}_h) \in \mathbb{P}_{k-1}(E) \right\}$$

- $k \geq 2$, for $k = 1$ P. F. Antonietti *et al.* (2014)

Velocity field virtual space

$$\mathbf{V}_h^k(E) := \left\{ \mathbf{v}_h \in [H^1(E) \cap C^0(E)]^2 : \mathbf{v}_h|_e \in [\mathbb{P}_k(e)]^2 \forall e \in \partial E, \right. \\ \left. -\Delta \mathbf{v}_h + \nabla s \in [\mathbb{P}_{k-2}(E)]^2, s \in L_0^2(E), \right. \\ \left. \operatorname{div}(\mathbf{v}_h) \in \mathbb{P}_{k-1}(E) \right\}$$

- $k \geq 2$, for $k = 1$ P. F. Antonietti *et al.* (2014)
- \mathbf{v}_h solves a Stokes-like problem

Velocity field virtual space

$$\mathbf{V}_h^k(E) := \left\{ \mathbf{v}_h \in [H^1(E) \cap C^0(E)]^2 : \mathbf{v}_h|_e \in [\mathbb{P}_k(e)]^2 \forall e \in \partial E, \right. \\ \left. -\Delta \mathbf{v}_h + \nabla s \in [\mathbb{P}_{k-2}(E)]^2, s \in L_0^2(E), \right. \\ \left. \operatorname{div}(\mathbf{v}_h) \in \mathbb{P}_{k-1}(E) \right\}$$

- $k \geq 2$, for $k = 1$ P. F. Antonietti *et al.* (2014)
- \mathbf{v}_h solves a Stokes-like problem
- modify the condition

$$-\Delta \mathbf{v}_h + \nabla s \in [\mathbb{P}_{k-2}(E)]^2$$

Velocity field virtual space

$$\mathbf{V}_h^k(E) := \left\{ \mathbf{v}_h \in [H^1(E) \cap C^0(E)]^2 : \mathbf{v}_h|_e \in [\mathbb{P}_k(e)]^2 \forall e \in \partial E, \right. \\ \left. -\Delta \mathbf{v}_h + \nabla s \in [\mathbb{P}_{k-2}(E)]^2, s \in L_0^2(E), \right. \\ \left. \operatorname{div}(\mathbf{v}_h) \in \mathbb{P}_{k-1}(E) \right\}$$

- $k \geq 2$, for $k = 1$ P. F. Antonietti *et al.* (2014)
- \mathbf{v}_h solves a Stokes-like problem
- modify the condition

$$-\Delta \mathbf{v}_h + \nabla s \in [\mathbb{P}_{k-2}(E)]^2 = \nabla \mathbb{P}_{k-1}(E) \oplus \mathbf{x}^\perp \mathbb{P}_{k-3}(E)$$

Velocity field virtual space

$$\mathbf{v}_h^k(E) := \left\{ \mathbf{v}_h \in [H^1(E) \cap C^0(E)]^2 : \mathbf{v}_h|_e \in [\mathbb{P}_k(e)]^2 \forall e \in \partial E, \right. \\ \left. \begin{aligned} & -\Delta \mathbf{v}_h + \nabla s \in \mathbf{x}^\perp \mathbb{P}_{k-3}(E), s \in L_0^2(E) \\ & \operatorname{div}(\mathbf{v}_h) \in \mathbb{P}_{k-1}(E) \end{aligned} \right\}$$

- $k \geq 2$, for $k = 1$ P. F. Antonietti *et al.* (2014)
- \mathbf{v}_h solves a Stokes-like problem
- modify the condition

$$\begin{aligned} -\Delta \mathbf{v}_h + \nabla s \in [\mathbb{P}_{k-2}(E)]^2 &= \nabla \mathbb{P}_{k-1}(E) \oplus \mathbf{x}^\perp \mathbb{P}_{k-3}(E) \\ -\Delta \mathbf{v}_h + \nabla s &\in \mathbf{x}^\perp \mathbb{P}_{k-3}(E) \end{aligned}$$

Velocity field virtual space

$$\mathbf{v}_h^k(E) := \left\{ \mathbf{v}_h \in [H^1(E) \cap C^0(E)]^2 : \mathbf{v}_h|_e \in [\mathbb{P}_k(e)]^2 \forall e \in \partial E, \right.$$

$$\left. \begin{aligned} & -\Delta \mathbf{v}_h + \nabla s \in \mathbf{x}^\perp \mathbb{P}_{k-3}(E), s \in L_0^2(E) \\ & \operatorname{div}(\mathbf{v}_h) \in \mathbb{P}_{k-1}(E) \end{aligned} \right\}$$

**Useful to count
space dimension**

$k \geq 2$, for $k = 1$ P. F. Antonietti *et al.* (2014)

- \mathbf{v}_h solves a Stokes-like problem
- modify the condition

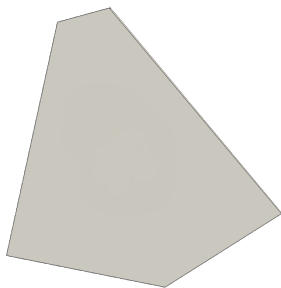
$$-\Delta \mathbf{v}_h + \nabla s \in [\mathbb{P}_{k-2}(E)]^2 = \nabla \mathbb{P}_{k-1}(E) \oplus \mathbf{x}^\perp \mathbb{P}_{k-3}(E)$$

$$-\Delta \mathbf{v}_h + \nabla s \in \mathbf{x}^\perp \mathbb{P}_{k-3}(E)$$

Velocity field virtual space - d.o.f.

$$\mathbf{V}_h^k(E) := \left\{ \mathbf{v}_h \in [H^1(E) \cap C^0(E)]^2 : \mathbf{v}_h|_e \in [\mathbb{P}_k(e)]^2 \forall e \in \partial E, \right.$$

$$\left. \begin{aligned} & -\Delta \mathbf{v}_h + \nabla s \in \mathbf{x}^\perp \mathbb{P}_{k-3}(E), s \in L_0^2(E), \\ & \operatorname{div}(\mathbf{v}_h) \in \mathbb{P}_{k-1}(E) \end{aligned} \right\}$$

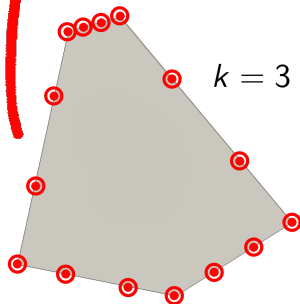


Velocity field virtual space - d.o.f.

$$\mathbf{V}_h^k(E) := \left\{ \mathbf{v}_h \in [H^1(E) \cap C^0(E)]^2 : \mathbf{v}_h|_e \in [\mathbb{P}_k(e)]^2 \forall e \in \partial E, \right.$$

$$\left. \begin{aligned} -\Delta \mathbf{v}_h &= \nabla s \in \mathbf{x}^\perp \mathbb{P}_{k-3}(E), s \in L_0^2(E), \\ \operatorname{div}(\mathbf{v}_h) &\in \mathbb{P}_{k-1}(E) \end{aligned} \right\}$$

- vectorial values at the vertices and $k - 1$ internal nodes



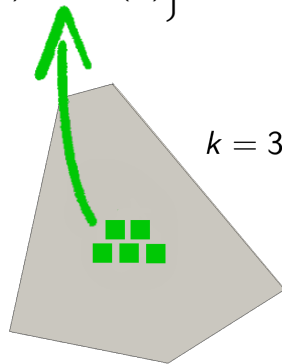
Velocity field virtual space - d.o.f.

$$\mathbf{V}_h^k(E) := \left\{ \mathbf{v}_h \in [H^1(E) \cap C^0(E)]^2 : \mathbf{v}_h|_e \in [\mathbb{P}_k(e)]^2 \forall e \in \partial E, \right.$$

$$\left. \begin{aligned} & -\Delta \mathbf{v}_h + \nabla s \in \mathbf{x}^\perp \mathbb{P}_{k-3}(E), s \in L_0^2(E), \\ & \operatorname{div}(\mathbf{v}_h) \in \mathbb{P}_{k-1}(E) \end{aligned} \right\}$$

- vectorial values at the vertices and $k - 1$ internal nodes
- $k(k + 1)/2 - 1$ divergence moments

$$\int_E \operatorname{div}(\mathbf{v}_h) m_\alpha \, dE$$



Velocity field virtual space - d.o.f.

$$\mathbf{V}_h^k(E) := \left\{ \mathbf{v}_h \in [H^1(E) \cap C^0(E)]^2 : \mathbf{v}_h|_e \in [\mathbb{P}_k(e)]^2 \forall e \in \partial E, \right.$$

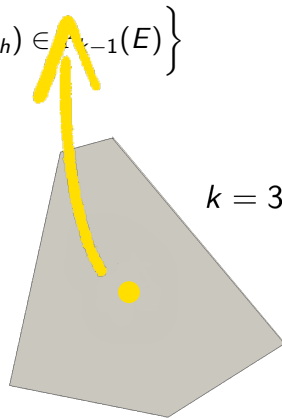
$$\left. \begin{aligned} & -\Delta \mathbf{v}_h + \nabla s \in \mathbf{x}^\perp \mathbb{P}_{k-3}(E), s \in L_0^2(E), \\ & \operatorname{div}(\mathbf{v}_h) \in \mathbb{P}_{k-1}(E) \end{aligned} \right\}$$

- vectorial values at the vertices and $k - 1$ internal nodes
- $k(k + 1)/2 - 1$ divergence moments

$$\int_E \operatorname{div}(\mathbf{v}_h) m_\alpha \, dE$$

- $(k - 1)(k - 2)/2$ perp moments

$$\int_E (\mathbf{v}_h \cdot \mathbf{m}^\perp) m_\beta \, dE$$



Velocity field virtual space - d.o.f.

$$\mathbf{V}_h^k(E) := \left\{ \mathbf{v}_h \in [H^1(E) \cap C^0(E)]^2 \mid \mathbf{v}_h|_e \in [\mathbb{P}_k(e)]^2 \forall e \in \partial E, \right. \\ \left. \int_E \operatorname{div} \mathbf{v}_h + \nabla s \in \mathbf{x}^\perp \mathbb{P}_{k-3}(E), s \in L_0^2(E), \right. \\ \left. \int_E \operatorname{div} \mathbf{v}_h \in \mathbb{P}_{k-1}(E) \right\}$$

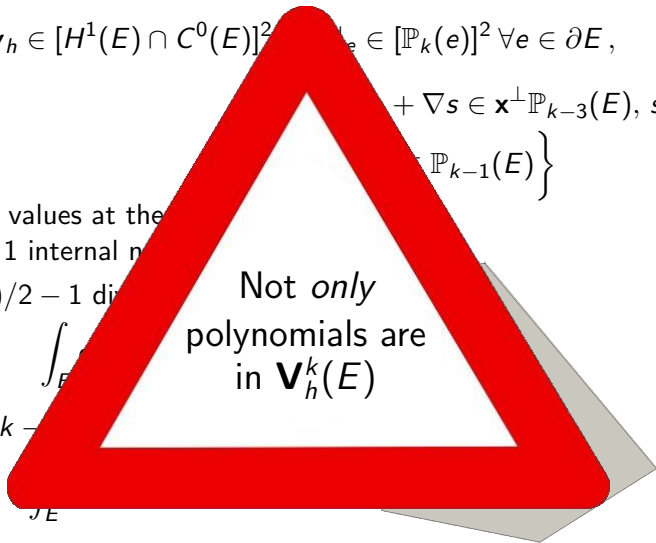
- vectorial values at the vertices and $k - 1$ internal nodes

- $k(k + 1)/2 - 1$ degrees of freedom

$$\int_E \operatorname{div} \mathbf{v}_h$$

- $(k - 1)(k - 2)$

Not *only*
polynomials are
in $\mathbf{V}_h^k(E)$



Projection operator Π_k^∇

$$\left\{ \begin{array}{l} \int_E \nabla(\mathbf{v}_h - \Pi_k^\nabla \mathbf{v}_h) : \nabla \mathbf{p}_k \, dE = 0 \quad \forall \mathbf{p}_k \in [\mathbb{P}_k(E)]^2 \\ \int_{\partial E} (\mathbf{v}_h - \Pi_k^\nabla \mathbf{v}_h) \cdot \mathbf{p}_0 \, de = 0 \quad \forall \mathbf{p}_0 \in [\mathbb{P}_0(E)]^2 \end{array} \right.$$

Projection operator Π_k^∇

$$\left\{ \begin{array}{l} \int_E \nabla(\mathbf{v}_h - \Pi_k^\nabla \mathbf{v}_h) : \nabla \mathbf{p}_k \, dE = 0 \quad \forall \mathbf{p}_k \in [\mathbb{P}_k(E)]^2 \\ \int_{\partial E} (\mathbf{v}_h - \Pi_k^\nabla \mathbf{v}_h) \cdot \mathbf{p}_0 \, de = 0 \quad \forall \mathbf{p}_0 \in [\mathbb{P}_0(E)]^2 \end{array} \right.$$

- $\mathbb{M}_k(E) := \{\mathbf{m}_i\}_{i=1}^n$
- $\mathbb{M}_0(E) := \{\mathbf{m}_1, \mathbf{m}_2\}$

Projection operator Π_k^∇

$$\left\{ \begin{array}{l} \int_E \nabla(\mathbf{v}_h - \Pi_k^\nabla \mathbf{v}_h) : \nabla \mathbf{p}_k \, dE = 0 \quad \forall \mathbf{p}_k \in [\mathbb{P}_k(E)]^2 \\ \int_{\partial E} (\mathbf{v}_h - \Pi_k^\nabla \mathbf{v}_h) \cdot \mathbf{p}_0 \, de = 0 \quad \forall \mathbf{p}_0 \in [\mathbb{P}_0(E)]^2 \end{array} \right.$$

- $\mathbb{M}_k(E) := \{\mathbf{m}_i\}_{i=1}^n$
- $\mathbb{M}_0(E) := \{\mathbf{m}_1, \mathbf{m}_2\}$
- $\Pi_k^\nabla \mathbf{v}_h := c_0 \mathbf{m}_1 + c_1 \mathbf{m}_1 + \dots + c_n \mathbf{m}_n$

Projection operator Π_k^∇

$$\left\{ \begin{array}{l} \int_E \nabla(\mathbf{v}_h - \Pi_k^\nabla \mathbf{v}_h) : \nabla \mathbf{p}_k \, dE = 0 \quad \forall \mathbf{p}_k \in [\mathbb{P}_k(E)]^2 \\ \int_{\partial E} (\mathbf{v}_h - \Pi_k^\nabla \mathbf{v}_h) \cdot \mathbf{p}_0 \, de = 0 \quad \forall \mathbf{p}_0 \in [\mathbb{P}_0(E)]^2 \end{array} \right.$$

- $\mathbb{M}_k(E) := \{\mathbf{m}_i\}_{i=1}^n$
- $\mathbb{M}_0(E) := \{\mathbf{m}_1, \mathbf{m}_2\}$
- $\Pi_k^\nabla \mathbf{v}_h := c_0 \mathbf{m}_1 + c_1 \mathbf{m}_1 + \dots + c_n \mathbf{m}_n$
- conditions according to $\mathbb{M}_k(E)$ and $\mathbb{M}_0(E)$

Projection operator Π_k^∇

$$\int_E (\nabla(\mathbf{v}_h) - \Pi_k^\nabla \nabla \mathbf{v}_h) \cdot \nabla \mathbf{p}_k \, dE = 0 \quad \forall \mathbf{p}_k \in [\mathbb{P}_k(E)]^2$$

$$\int_{\partial E} (\mathbf{v}_h - \Pi_k^\nabla \mathbf{v}_h) \cdot \mathbf{p}_0 \, d\mathbf{e} = 0 \quad \forall \mathbf{p}_0 \in [\mathbb{P}_0(E)]^2$$

- $\mathbb{M}_k(E) := \{\mathbf{m}_i\}_{i=1}^n$
- $\mathbb{M}_0(E) := \{\mathbf{m}_1, \mathbf{m}_2\}$
- $\Pi_k^\nabla \mathbf{v}_h := c_0 \mathbf{m}_1 + c_1 \mathbf{m}_1 + \dots +$
- conditions according to $\mathbb{M}_k(E)$ &



Projection operator Π_k^∇ - Yes we can compute it!

$$\int_E \nabla(\mathbf{v}_h - \Pi_k^\nabla \mathbf{v}_h) : \nabla \mathbf{m}_i \, dE = 0$$

Projection operator Π_k^∇ - Yes we can compute it!

$$\int_E \nabla(\mathbf{v}_h - \Pi_k^\nabla \mathbf{v}_h) : \nabla \mathbf{m}_i \, dE = 0$$
$$\sum_{j=1}^n c_j \int_E \nabla \mathbf{m}_j : \nabla \mathbf{m}_i \, dE = \int_E \nabla \mathbf{v}_h : \nabla \mathbf{m}_i \, dE$$

Projection operator Π_k^∇ - Yes we can compute it!

$$\int_E \nabla(\mathbf{v}_h - \Pi_k^\nabla \mathbf{v}_h) : \nabla \mathbf{m}_i \, dE = 0$$

$$\sum_{j=1}^n c_j \int_E \nabla \mathbf{m}_j : \nabla \mathbf{m}_i \, dE = \int_E \nabla \mathbf{v}_h : \nabla \mathbf{m}_i \, dE$$

Focus on the virtual part

$$\int_E \nabla \mathbf{v}_h : \nabla \mathbf{m}_i \, dE$$

Projection operator Π_k^∇ - Yes we can compute it!

$$\int_E \nabla(\mathbf{v}_h - \Pi_k^\nabla \mathbf{v}_h) : \nabla \mathbf{m}_i \, dE = 0$$

$$\sum_{j=1}^n c_j \int_E \nabla \mathbf{m}_j : \nabla \mathbf{m}_i \, dE = \int_E \nabla \mathbf{v}_h : \nabla \mathbf{m}_i \, dE$$

Focus on the virtual part

$$\int_E \nabla \mathbf{v}_h : \nabla \mathbf{m}_i \, dE = - \int_E \mathbf{v}_h \cdot \Delta \mathbf{m}_i \, dE + \int_{\partial E} \mathbf{v}_h \cdot (\nabla \mathbf{m}_i \mathbf{n}) \, d\mathbf{e}$$

Projection operator Π_k^∇ - Yes we can compute it!

$$\int_E \nabla(\mathbf{v}_h - \Pi_k^\nabla \mathbf{v}_h) : \nabla \mathbf{m}_i \, dE = 0$$

$$\sum_{j=1}^n c_j \int_E \nabla \mathbf{m}_j : \nabla \mathbf{m}_i \, dE = \int_E \nabla \mathbf{v}_h : \nabla \mathbf{m}_i \, dE$$

Focus on the virtual part

$$\begin{aligned} \int_E \nabla \mathbf{v}_h : \nabla \mathbf{m}_i \, dE &= - \int_E \mathbf{v}_h \cdot \Delta \mathbf{m}_i \, dE + \int_{\partial E} \mathbf{v}_h \cdot (\nabla \mathbf{m}_i \mathbf{n}) \, de \\ &= - \int_E \mathbf{v}_h \cdot \Delta \mathbf{m}_i \, dE + \sum_{e \in \partial E} \int_e \mathbf{v}_h \cdot (\nabla \mathbf{m}_i \mathbf{n}_e) \, de \end{aligned}$$

Projection operator Π_k^∇ - Yes we can compute it!

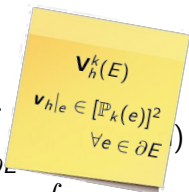
$$\int_E \nabla(\mathbf{v}_h - \Pi_k^\nabla \mathbf{v}_h) : \nabla \mathbf{m}_i \, dE = 0$$

$$\sum_{j=1}^n c_j \int_E \nabla \mathbf{m}_j : \nabla \mathbf{m}_i \, dE = \int_E \nabla \mathbf{v}_h : \nabla \mathbf{m}_i \, dE$$

Focus on the virtual part

$$\int_E \nabla \mathbf{v}_h : \nabla \mathbf{m}_i \, dE = - \int_E \mathbf{v}_h \cdot \Delta \mathbf{m}_i \, dE + \int_{\partial E} \mathbf{v}_h|_e \cdot (\nabla \mathbf{m}_i \mathbf{n}_e) \, de$$

$$= - \int_E \mathbf{v}_h \cdot \Delta \mathbf{m}_i \, dE + \sum_{e \in \partial E} \int_e \mathbf{v}_h \cdot (\nabla \mathbf{m}_i \mathbf{n}_e) \, de$$



Projection operator Π_k^∇ - Yes we can compute it!

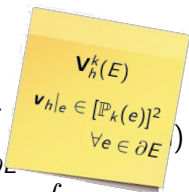
$$\int_E \nabla(\mathbf{v}_h - \Pi_k^\nabla \mathbf{v}_h) : \nabla \mathbf{m}_i \, dE = 0$$

$$\sum_{j=1}^n c_j \int_E \nabla \mathbf{m}_j : \nabla \mathbf{m}_i \, dE = \int_E \nabla \mathbf{v}_h : \nabla \mathbf{m}_i \, dE$$

Focus on the virtual part

$$\int_E \nabla \mathbf{v}_h : \nabla \mathbf{m}_i \, dE = - \int_E \mathbf{v}_h \cdot \Delta \mathbf{m}_i \, dE + \int_{\partial E} \mathbf{v}_h|_e \cdot (\nabla \mathbf{m}_i \cdot \mathbf{n}_e) \, de$$

$$= - \int_E \mathbf{v}_h \cdot \Delta \mathbf{m}_i \, dE + \sum_{e \in \partial E} \int_e \mathbf{v}_h \cdot (\nabla \mathbf{m}_i \cdot \mathbf{n}_e) \, de$$



Projection operator Π_k^∇ - Yes we can compute it!

$$- \int_E \mathbf{v}_h \cdot \Delta \mathbf{m}_i dE$$



Projection operator Π_k^∇ - Yes we can compute it!

$$- \int_E \mathbf{v}_h \cdot \Delta \mathbf{m}_i dE$$

$$\Delta \mathbf{m}_i = c_\alpha \mathbf{m}_\alpha + c_\beta \mathbf{m}_\beta + c_\delta \mathbf{m}_\delta + c_\gamma \mathbf{m}_\gamma$$



Projection operator Π_k^∇ - Yes we can compute it!

$$- \int_E \mathbf{v}_h \cdot \Delta \mathbf{m}_i \, dE$$

$$\Delta \mathbf{m}_i = c_\alpha \mathbf{m}_\alpha + c_\beta \mathbf{m}_\beta + c_\delta \mathbf{m}_\delta + c_\gamma \mathbf{m}_\gamma$$

$$\mathbf{m}_\alpha, \mathbf{m}_\beta, \mathbf{m}_\delta, \mathbf{m}_\gamma \in \mathbb{P}_{k-2}(E)$$



Projection operator Π_k^∇ - Yes we can compute it!

$$- \int_E \mathbf{v}_h \cdot \Delta \mathbf{m}_i \, dE$$

$$\Delta \mathbf{m}_i = c_\alpha \mathbf{m}_\alpha + c_\beta \mathbf{m}_\beta + c_\delta \mathbf{m}_\delta + c_\gamma \mathbf{m}_\gamma$$



$$\mathbf{m}_\alpha, \mathbf{m}_\beta, \mathbf{m}_\delta, \mathbf{m}_\gamma \in \mathbb{P}_{k-2}(E)$$

$$\mathbf{m}_\alpha = c_\zeta^\alpha \nabla m_\zeta + c_\eta^\alpha \mathbf{m}^\perp m_\eta$$

$$m_\zeta \in \mathbb{P}_{k-1}(E) \text{ and } m_\eta \in \mathbb{P}_{k-3}(E)$$

Projection operator Π_k^∇ - Yes we can compute it!

$$\int_E \mathbf{v}_h \cdot \mathbf{m}_\alpha \, dE$$

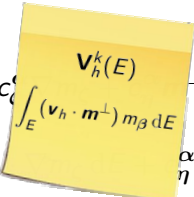
Projection operator Π_k^∇ - Yes we can compute it!

$$\int_E \mathbf{v}_h \cdot \mathbf{m}_\alpha \, dE = \int_E \mathbf{v}_h \cdot (c_\zeta^\alpha \nabla m_\zeta + c_\eta^\alpha \mathbf{m}^\perp m_\eta) \, dE$$

Projection operator Π_k^∇ - Yes we can compute it!

$$\begin{aligned}\int_E \mathbf{v}_h \cdot \mathbf{m}_\alpha \, dE &= \int_E \mathbf{v}_h \cdot (c_\zeta^\alpha \nabla m_\zeta + c_\eta^\alpha \mathbf{m}^\perp m_\eta) \, dE \\ &= c_\zeta^\alpha \int_E \mathbf{v}_h \cdot \nabla m_\zeta \, dE + c_\eta^\alpha \int_E (\mathbf{v}_h \cdot \mathbf{m}^\perp) m_\eta \, dE\end{aligned}$$

Projection operator Π_k^∇ - Yes we can compute it!

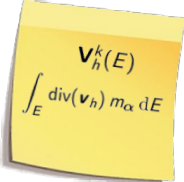
$$\begin{aligned}
 \int_E \mathbf{v}_h \cdot \mathbf{m}_\alpha \, dE &= \int_E \mathbf{v}_h \cdot \left(c_\zeta^\alpha \int_E (\mathbf{v}_h \cdot \mathbf{m}^\perp) m_\beta \, dE \right)^\perp m_\eta \, dE \\
 &= c_\zeta^\alpha \int_E \mathbf{v}_h \cdot \left(\int_E (\mathbf{v}_h \cdot \mathbf{m}^\perp) m_\eta \, dE \right)^\perp m_\alpha \, dE
 \end{aligned}$$


Projection operator Π_k^∇ - Yes we can compute it!

$$\begin{aligned}
\int_E \mathbf{v}_h \cdot \mathbf{m}_\alpha \, dE &= \int_E \mathbf{v}_h \cdot (c_\zeta^\alpha \nabla m_\zeta + c_\eta^\alpha \mathbf{m}^\perp m_\eta) \, dE \\
&= c_\zeta^\alpha \int_E \mathbf{v}_h \cdot \nabla m_\zeta \, dE + c_\eta^\alpha \int_E (\mathbf{v}_h \cdot \mathbf{m}^\perp) m_\eta \, dE \\
&= -c_\zeta^\alpha \int_E \operatorname{div}(\mathbf{v}_h) m_\zeta \, dE + c_\zeta^\alpha \int_{\partial E} (\mathbf{v}_h \cdot \mathbf{n}) m_\zeta \, de + \dots
\end{aligned}$$

Projection operator Π_k^∇ - Yes we can compute it!

$$\begin{aligned}
 \int_E \mathbf{v}_h \cdot \mathbf{m}_\alpha \, dE &= \int_E \mathbf{v}_h \cdot (c_\zeta^\alpha \nabla m_\zeta + c_\eta^\alpha \mathbf{m}^\perp m_\eta) \, dE \\
 &= c_\zeta^\alpha \int_E \mathbf{v}_h \cdot \nabla m_\zeta \, dE + c_\eta^\alpha \int_E (\mathbf{v}_h \cdot \mathbf{m}^\perp) m_\eta \, dE \\
 &= -c_\zeta^\alpha \int_E \operatorname{div}(\mathbf{v}_h) m_\zeta \, dE + c_\zeta^\alpha \int_{\partial E} (\mathbf{v}_h \cdot \mathbf{n}) m_\zeta \, de + \dots
 \end{aligned}$$



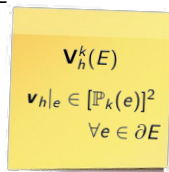
$$\begin{aligned}
 &\mathbf{v}_h^k(E) \\
 &\int_E \operatorname{div}(\mathbf{v}_h) m_\alpha \, dE
 \end{aligned}$$

Projection operator Π_k^∇ - Yes we can compute it!

$$\begin{aligned}
\int_E \mathbf{v}_h \cdot \mathbf{m}_\alpha \, dE &= \int_E \mathbf{v}_h \cdot (c_\zeta^\alpha \nabla m_\zeta + c_\eta^\alpha \mathbf{m}^\perp m_\eta) \, dE \\
&= c_\zeta^\alpha \int_E \mathbf{v}_h \cdot \nabla m_\zeta \, dE + c_\eta^\alpha \int_E (\mathbf{v}_h \cdot \mathbf{m}^\perp) m_\eta \, dE \\
&= -c_\zeta^\alpha \int_E \operatorname{div}(\mathbf{v}_h) m_\zeta \, dE + c_\zeta^\alpha \int_{\partial E} (\mathbf{v}_h \cdot \mathbf{n}) m_\zeta \, de + \dots \\
&= -c_\zeta^\alpha \int_E \operatorname{div}(\mathbf{v}_h) m_\zeta \, dE + c_\zeta^\alpha \sum_{e \in \partial E} (\mathbf{v}_h \cdot \mathbf{n}_e) m_\zeta \, de + \dots
\end{aligned}$$

Projection operator Π_k^∇ - Yes we can compute it!

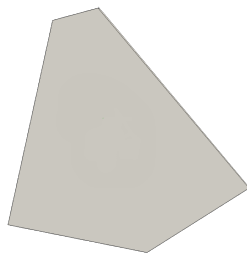
$$\begin{aligned}
\int_E \mathbf{v}_h \cdot \mathbf{m}_\alpha \, dE &= \int_E \mathbf{v}_h \cdot (c_\zeta^\alpha \nabla m_\zeta + c_\eta^\alpha \mathbf{m}^\perp m_\eta) \, dE \\
&= c_\zeta^\alpha \int_E \mathbf{v}_h \cdot \nabla m_\zeta \, dE + c_\eta^\alpha \int_E (\mathbf{v}_h \cdot \mathbf{m}^\perp) m_\eta \, dE \\
&= -c_\zeta^\alpha \int_E \operatorname{div}(\mathbf{v}_h) m_\zeta \, dE + c_\zeta^\alpha \int_{\partial E} (\mathbf{v}_h \cdot \mathbf{n}) m_\zeta \, de + \dots \\
&= -c_\zeta^\alpha \int_E \operatorname{div}(\mathbf{v}_h) m_\zeta \, dE + c_\zeta^\alpha \sum_{e \in \partial E} (\mathbf{v}_h \cdot \mathbf{n}_e) m_\zeta \, de + \dots
\end{aligned}$$



$$\begin{aligned}
&\mathbf{v}_h^k(E) \\
&\mathbf{v}_h|_e \in [\mathbb{P}_k(e)]^2 \\
&\forall e \in \partial E
\end{aligned}$$

Pressure virtual space and d.o.f.

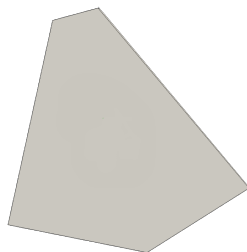
$$Q_h^{k-1}(E) := \{q_h : q_h \in \mathbb{P}_{k-1}(E)\}$$



Pressure virtual space and d.o.f.

$$Q_h^{k-1}(E) := \{q_h : q_h \in \mathbb{P}_{k-1}(E)\}$$

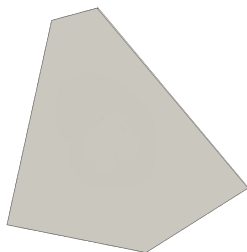
- no VEM approximation



Pressure virtual space and d.o.f.

$$Q_h^{k-1}(E) := \{q_h : q_h \in \mathbb{P}_{k-1}(E)\}$$

- no VEM approximation
- no projection

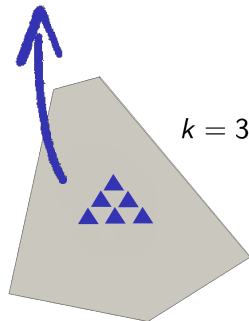


Pressure virtual space and d.o.f.

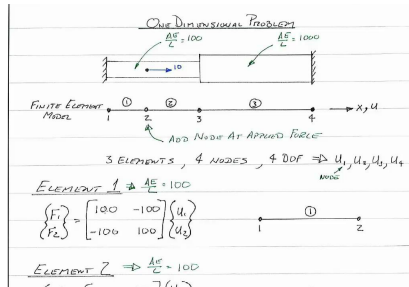
$$Q_h^{k-1}(E) := \{q_h : q_h \in \mathbb{P}_{k-1}(E)\}$$

- no VEM approximation
- no projection
- $k(k+1)/2$ moments

$$\int_E q_h m_\alpha dE$$



Problem discretization



Problem discretization

Consider a polyhedral decomposition Ω_h of Ω , then we solve:

$$\left\{ \begin{array}{l} \text{find } (\mathbf{u}_h, p_h) \in \mathbf{V}_h^k \times Q_h^{k-1} \text{ such that} \\ a_h(\mathbf{u}_h, \mathbf{v}_h) + \int_{\Omega_h} \operatorname{div}(\mathbf{v}_h) p_h \, d\Omega_h = \int_{\Omega_h} \mathbf{f}_h \cdot \mathbf{v}_h \, d\Omega_h \quad \forall \mathbf{v}_h \in \mathbf{V}_{h,0}^k \\ \int_{\Omega_h} \operatorname{div}(\mathbf{u}_h) q_h \, d\Omega_h = 0 \quad \forall q_h \in Q_h^{k-1} \end{array} \right.$$

Problem discretization

Consider a polyhedral decomposition Ω_h of Ω , then we solve:

$$\left\{ \begin{array}{l} \text{find } (\mathbf{u}_h, p_h) \in \mathbf{V}_h^k \times Q_h^{k-1} \text{ such that} \\ a_h(\mathbf{u}_h, \mathbf{v}_h) + \int_{\Omega_h} \operatorname{div}(\mathbf{v}_h) p_h \, d\Omega_h = \int_{\Omega_h} \mathbf{f}_h \cdot \mathbf{v}_h \, d\Omega_h \quad \forall \mathbf{v}_h \in \mathbf{V}_{h,0}^k \\ \int_{\Omega_h} \operatorname{div}(\mathbf{u}_h) q_h \, d\Omega_h = 0 \quad \forall q_h \in Q_h^{k-1} \end{array} \right.$$

where

- we define from Π_k^∇ and dofs

$$a_h(\cdot, \cdot) \approx \int_{\Omega} \nu \nabla \mathbf{u} : \nabla \mathbf{v} \, d\Omega$$

Problem discretization

Consider a polyhedral decomposition Ω_h of Ω , then we solve:

$$\left\{ \begin{array}{l} \text{find } (\mathbf{u}_h, p_h) \in \mathbf{V}_h^k \times Q_h^{k-1} \text{ such that} \\ a_h(\mathbf{u}_h, \mathbf{v}_h) + \int_{\Omega_h} \operatorname{div}(\mathbf{v}_h) p_h \, d\Omega_h = \int_{\Omega_h} \mathbf{f}_h \cdot \mathbf{v}_h \, d\Omega_h \quad \forall \mathbf{v}_h \in \mathbf{V}_{h,0}^k \\ \int_{\Omega_h} \operatorname{div}(\mathbf{u}_h) q_h \, d\Omega_h = 0 \quad \forall q_h \in Q_h^{k-1} \end{array} \right.$$

where

- we define from Π_k^∇ and dofs

$$a_h(\cdot, \cdot) \approx \int_{\Omega} \nu \nabla \mathbf{u} : \nabla \mathbf{v} \, d\Omega$$

- \mathbf{f}_h is a proper L^2 projection of \mathbf{f}

Defintion of $a_h(\cdot, \cdot)$

Follow a standard VEM approach

$$a_h(\mathbf{v}_h, \mathbf{w}_h) = \sum_{E \in \Omega_h} a_{h,E}(\mathbf{v}_h, \mathbf{w}_h)$$

Defintion of $a_h(\cdot, \cdot)$

Follow a standard VEM approach

$$a_h(\mathbf{v}_h, \mathbf{w}_h) = \sum_{E \in \Omega_h} a_{h,E}(\mathbf{v}_h, \mathbf{w}_h)$$

where

$$a_{h,E}(\mathbf{v}_h, \mathbf{w}_h) := \int_E \nabla(\Pi_k^\nabla \mathbf{v}_h) : \nabla(\Pi_k^\nabla \mathbf{w}_h) dE \\ + s_E(\mathbf{v}_h - \Pi_k^\nabla \mathbf{v}_h, \mathbf{w}_h - \Pi_k^\nabla \mathbf{w}_h)$$

Defintion of $a_h(\cdot, \cdot)$

Follow a standard VEM approach

$$a_h(\mathbf{v}_h, \mathbf{w}_h) = \sum_{E \in \Omega_h} a_{h,E}(\mathbf{v}_h, \mathbf{w}_h)$$

where

$$a_{h,E}(\mathbf{v}_h, \mathbf{w}_h) := \int_E \nabla(\Pi_k^\nabla \mathbf{v}_h) : \nabla(\Pi_k^\nabla \mathbf{w}_h) dE + s_E(\mathbf{v}_h - \Pi_k^\nabla \mathbf{v}_h, \mathbf{w}_h - \Pi_k^\nabla \mathbf{w}_h)$$

consistency

Defintion of $a_h(\cdot, \cdot)$

Follow a standard VEM approach

$$a_h(\mathbf{v}_h, \mathbf{w}_h) = \sum_{E \in \Omega_h} a_{h,E}(\mathbf{v}_h, \mathbf{w}_h)$$

where

$$a_{h,E}(\mathbf{v}_h, \mathbf{w}_h) := \int_E \nabla(\Pi_k^\nabla \mathbf{v}_h) : \nabla(\Pi_k^\nabla \mathbf{w}_h) dE$$

$$+ s_E(\mathbf{v}_h - \Pi_k^\nabla \mathbf{v}_h, \mathbf{w}_h - \Pi_k^\nabla \mathbf{w}_h)$$

stability

Defintion of $a_h(\cdot, \cdot)$

Follow a standard VEM approach

$$a_h(\mathbf{v}_h, \mathbf{w}_h) = \sum_{E \in \Omega_h} a_{h,E}(\mathbf{v}_h, \mathbf{w}_h)$$

where

$$a_{h,E}(\mathbf{v}_h, \mathbf{w}_h) := \int_E \nabla(\Pi_k^\nabla \mathbf{v}_h) : \nabla(\Pi_k^\nabla \mathbf{w}_h) dE$$

$$+ s_E(\mathbf{v}_h - \Pi_k^\nabla \mathbf{v}_h, \mathbf{w}_h - \Pi_k^\nabla \mathbf{w}_h)$$

stability



Defintion of $a_h(\cdot, \cdot)$ - stability

We substitute with a computable approximation,
L. Beirão *et al.* 2013

$$\begin{aligned} & \int_E \nabla(I - \Pi_E^\nabla)\phi_i \cdot \nabla(I - \Pi_E^\nabla)\phi_j \\ & \approx \sum_{r=1}^{N_{\text{dofs}}^E} \text{dof}_r((I - \Pi_E^\nabla)\phi_i) \text{dof}_r((I - \Pi_E^\nabla)\phi_j) \end{aligned}$$

where N_{dofs}^E is the number of dofs of E .

Mixed term

$$\int_{\Omega_h} \operatorname{div}(\mathbf{v}_h) p_h \, d\Omega_h$$

Mixed term

$$\int_{\Omega_h} \operatorname{div}(\mathbf{v}_h) p_h \, d\Omega_h = \sum_{E \in \Omega_h} \int_E \operatorname{div}(\mathbf{v}_h) p_h \, dE$$

Mixed term

$$\int_{\Omega_h} \operatorname{div}(\mathbf{v}_h) p_h \, d\Omega_h = \sum_{E \in \Omega_h} \int_E \operatorname{div}(\mathbf{v}_h) p_h \, dE$$

**there is no
approximation**

Mixed term

$$\int_{\Omega_h} \operatorname{div}(\mathbf{v}_h) p_h \, d\Omega_h = \sum_{E \in \Omega_h} \int_E \operatorname{div}(\mathbf{v}_h) p_h \, dE$$

if $p_h \in \mathbb{R}$

**there is no
approximation**

$$\begin{aligned} \int_E \operatorname{div}(\mathbf{v}_h) p_h \, dE &= p_h \int_E \operatorname{div}(\mathbf{v}_h) \, dE \\ &= p_h \int_{\partial E} (\mathbf{v}_h \cdot \mathbf{n}) \, d\mathbf{e} \\ &= p_h \sum_{e \in \partial E} \int_e (\mathbf{v}_h \cdot \mathbf{n}_e) \, d\mathbf{e} \end{aligned}$$

Mixed term

$$\int_{\Omega_h} \operatorname{div}(\mathbf{v}_h) p_h \, d\Omega_h = \sum_{E \in \Omega_h} \int_E \operatorname{div}(\mathbf{v}_h) p_h \, dE$$

if $p_h \in \mathbb{R}$

there is no approximation

$$\begin{aligned} \int_E \operatorname{div}(\mathbf{v}_h) p_h \, dE &= p_h \int_E \operatorname{div}(\mathbf{v}_h) \, dE \\ &= p_h \int_{\partial E} (\mathbf{v}_h \cdot \mathbf{n}) \, de \\ &= p_h \sum_{e \in \partial E} \int_e (\mathbf{v}_h \cdot \mathbf{n}_e) \, de \end{aligned}$$

$$\mathbf{v}_h^k(E)$$

$$\mathbf{v}_h|_e \in [\mathbb{P}_k(e)]^2$$

$$\forall e \in \partial E$$

Mixed term

$$\int_{\Omega_h} \operatorname{div}(\mathbf{v}_h) p_h \, d\Omega_h = \sum_{E \in \Omega_h} \int_E \operatorname{div}(\mathbf{v}_h) p_h \, dE$$

if $p_h \in \mathbb{P}_{k-1}(E) \setminus \mathbb{R}$

**there is no
approximation**

$$\int_E \operatorname{div}(\mathbf{v}_h) p_h \, dE = \sum_{s=1}^n c_s^{p_h} \int_E \operatorname{div}(\mathbf{v}_h) m_s \, dE$$

Mixed term

$$\int_{\Omega_h} \operatorname{div}(\mathbf{v}_h) p_h \, d\Omega_h = \sum_{E \in \Omega_h} \int_E \operatorname{div}(\mathbf{v}_h) p_h \, dE$$

if $p_h \in \mathbb{P}_{k-1}(E) \setminus \mathbb{R}$

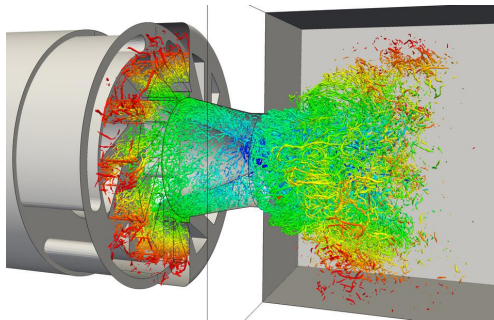
there is no approximation

$$\int_E \operatorname{div}(\mathbf{v}_h) p_h \, dE = \sum_{s=1}^n c_s^{p_h} \int_E \operatorname{div}(\mathbf{v}_h) m_s \, dE$$

$$\mathbf{v}_h^k(E)$$

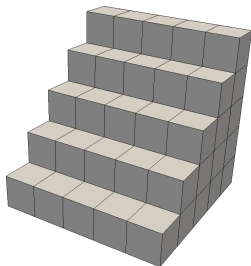
$$\int_E \operatorname{div}(\mathbf{v}_h) m_\alpha \, dE$$

Numerical examples

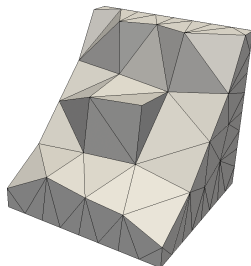


Mesh types

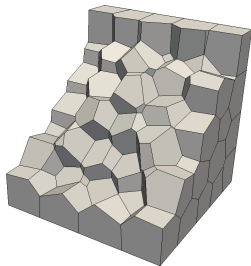
Cube



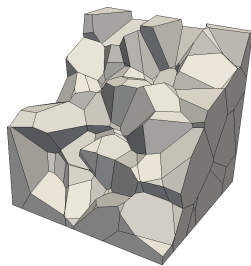
Tetra



CVT



Random



Error norms

- H^1 -velocity error:

$$e_{H^1}^u := \sqrt{\sum_{E \in \Omega_h} \|\nabla \mathbf{u} - \Pi_{k-1}^0 \nabla \mathbf{u}_h\|_{L^2(E)}^2} \sim h^k$$

- L^2 -pressure error:

$$e_{L^2}^p := \sqrt{\sum_{E \in \Omega_h} \|p - p_h\|_{L^2(E)}^2} \sim h^k$$

"Divergence free Virtual Elements for the Stokes problem on polygonal meshes"
L. Beirão da Veiga, C. Lovadina, and G. Vacca (2017)

Example 1: Convergence analysis for Stokes

Let us consider a Stokes problem

$$\begin{cases} -\nu \Delta \mathbf{u} - \nabla p = \mathbf{f} & \text{in } \Omega \\ \operatorname{div}(\mathbf{u}) = 0 & \text{in } \Omega \\ \mathbf{u} = \mathbf{r} & \text{on } \partial\Omega \end{cases}$$

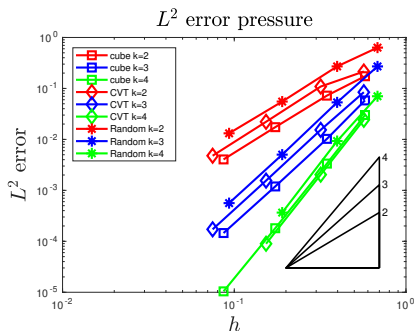
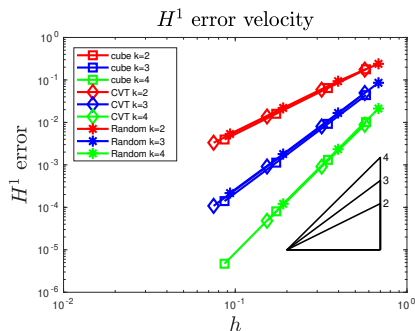
where the exact solution is

$$\mathbf{u}(x, y, z) := \begin{pmatrix} \sin(\pi x) \cos(\pi y) \cos(\pi z) \\ \cos(\pi x) \sin(\pi y) \cos(\pi z) \\ -2 \cos(\pi x) \cos(\pi y) \sin(\pi z) \end{pmatrix}$$

and

$$p(x, y, z) := -\pi \cos(\pi x) \cos(\pi y) \cos(\pi z).$$

Example 1: Convergence analysis for Stokes



"The Stokes complex for Virtual Elements in three dimensions"
 L. Beirão da Veiga, F. Dassi, and G. Vacca submitted

Example 2: Convergence analysis for Navier-Stokes

Let us consider a Navier-Stokes problem

$$\begin{cases} -\nu \Delta \mathbf{u} + \mathbf{u} \nabla \mathbf{u} - \nabla p = \mathbf{f} & \text{in } \Omega \\ \operatorname{div}(\mathbf{u}) = 0 & \text{in } \Omega \\ \mathbf{u} = \mathbf{r} & \text{on } \partial\Omega \end{cases}$$

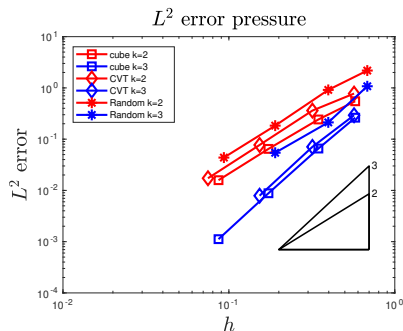
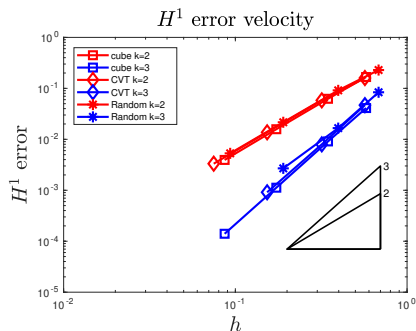
where the exact solution is

$$\mathbf{u}(x, y, z) := \begin{pmatrix} \sin(\pi x) \cos(\pi y) \cos(\pi z) \\ \cos(\pi x) \sin(\pi y) \cos(\pi z) \\ -2 \cos(\pi x) \cos(\pi y) \sin(\pi z) \end{pmatrix}$$

and

$$p(x, y, z) := \sin(2\pi x) \sin(2\pi y) \sin(2\pi z).$$

Example 2: Convergence analysis for Navier-Stokes



"The Stokes complex for Virtual Elements in three dimensions"
 L. Beirão da Veiga, F. Dassi, and G. Vacca submitted

Example 3: Benchmark problems

Let us consider a Stokes problem, we have the following estimate

$$|\mathbf{u} - \mathbf{u}_h|_1 \lesssim h^s \mathcal{F}(\mathbf{u}; \nu, \gamma) + h^{s+2} \mathcal{H}(\mathbf{f}; \nu)$$

for suitable functions \mathcal{F} , \mathcal{H} , \mathcal{K} independent of h .

Example 3: Benchmark problems

Let us consider a Stokes problem, we have the following estimate

$$|\mathbf{u} - \mathbf{u}_h|_1 \lesssim h^s \mathcal{F}(\mathbf{u}; \nu, \gamma) + h^{s+2} \mathcal{H}(\mathbf{f}; \nu)$$

for suitable functions \mathcal{F} , \mathcal{H} , \mathcal{K} independent of h .



Example 3: Benchmark problems

We consider two problems

$$\mathbf{u}(x, y, z) := \begin{pmatrix} k x z^{k-1} \\ k y z^{k-1} \\ (2-k)x^k + (2-k)y^k - 2z^k \end{pmatrix},$$

and

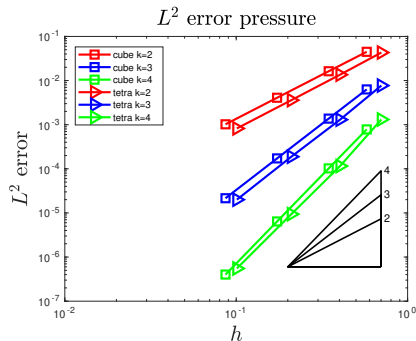
$$p_1(x, y, z) := x^k y + y^k z + z^k x - \frac{3}{2(k+1)},$$

or

$$p_2(x, y, z) := \sin(2\pi x) \sin(2\pi y) \sin(2\pi z).$$

Example 3: Benchmark problem, case p_1 H^1 error velocity

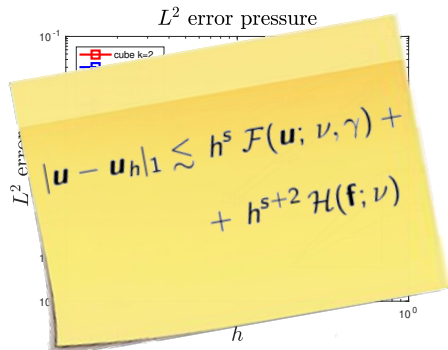
k	Cube	Tetra
2	1.0576e-13	7.2075e-13
3	2.7333e-13	1.1927e-12
4	1.5266e-12	2.2718e-10



"The Stokes complex for Virtual Elements in three dimensions"
 L. Beirão da Veiga, F. Dassi, and G. Vacca submitted

Example 3: Benchmark problem, case p_1 H^1 error velocity

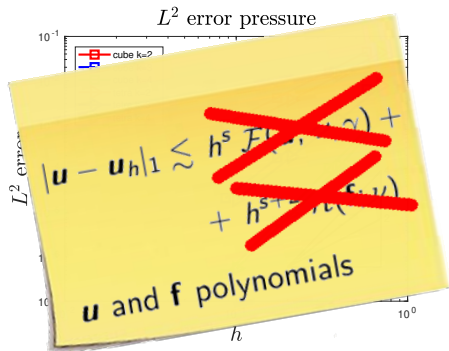
k	Cube	Tetra
2	1.0576e-13	7.2075e-13
3	2.7333e-13	1.1927e-12
4	1.5266e-12	2.2718e-10



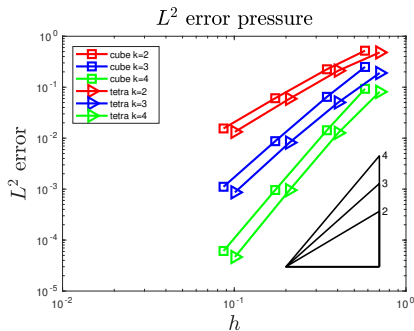
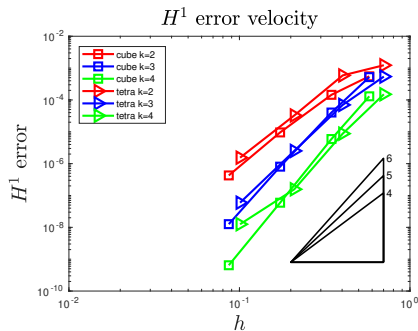
"The Stokes complex for Virtual Elements in three dimensions"
 L. Beirão da Veiga, F. Dassi, and G. Vacca submitted

Example 3: Benchmark problem, case p_1 H^1 error velocity

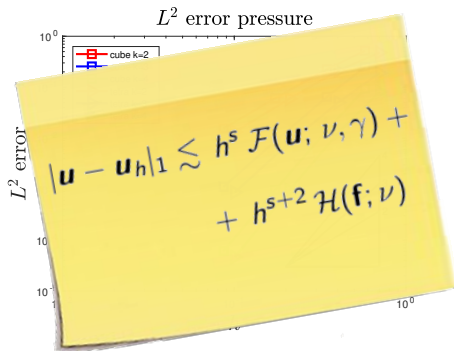
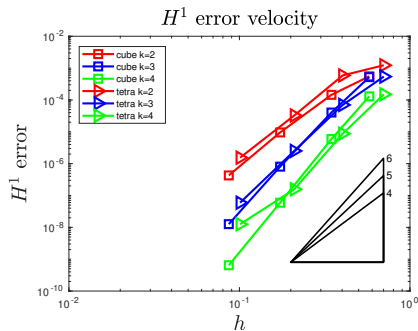
k	Cube	Tetra
2	1.0576e-13	7.2075e-13
3	2.7333e-13	1.1927e-12
4	1.5266e-12	2.2718e-10



"The Stokes complex for Virtual Elements in three dimensions"
 L. Beirão da Veiga, F. Dassi, and G. Vacca submitted

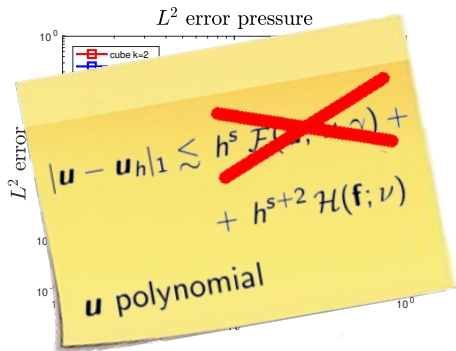
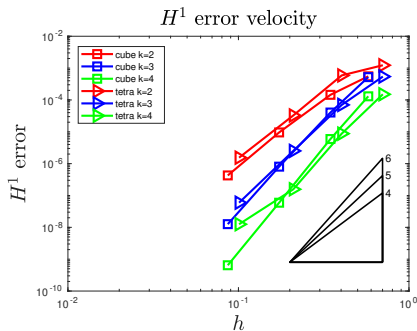
Example 3: Benchmark problem, case p_2 

"The Stokes complex for Virtual Elements in three dimensions"
 L. Beirão da Veiga, F. Dassi, and G. Vacca submitted

Example 3: Benchmark problem, case p_2 

"The Stokes complex for Virtual Elements in three dimensions"
 L. Beirão da Veiga, F. Dassi, and G. Vacca submitted

Example 3: Benchmark problem, case p_2



"The Stokes complex for Virtual Elements in three dimensions"
 L. Beirão da Veiga, F. Dassi, and G. Vacca submitted

Conclusions



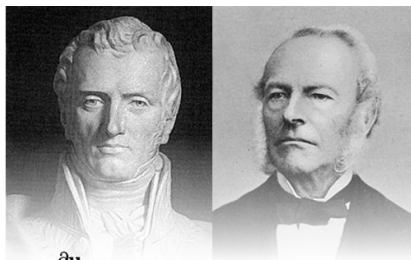
Conclusions

We presented Virtual Element approach

Conclusions

We presented Virtual Element approach

- for Stokes and Navier-Stokes problems 2d/3d



$$\frac{\partial \mathbf{u}}{\partial t} + (\mathbf{u} \cdot \nabla) \mathbf{u} - \nu \nabla^2 \mathbf{u} = -\nabla p + \mathbf{g}.$$

Conclusions

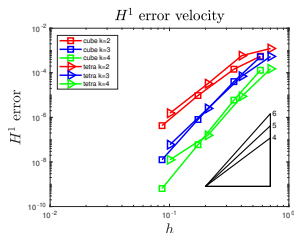
We presented Virtual Element approach

- for Stokes and Navier-Stokes problems 2d/3d
- div-free property

$$|\mathbf{u} - \mathbf{u}_h|_1 \lesssim h^s \mathcal{F}(\mathbf{u}; \nu, \gamma) + h^{s+2} \mathcal{H}(\mathbf{f}; \nu)$$

H^1 error velocity

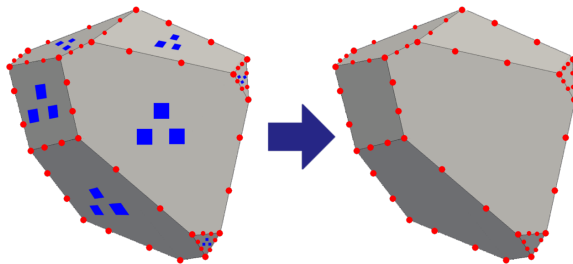
k	Cube	Tetra
2	1.0576e-13	7.2075e-13
3	2.7333e-13	1.1927e-12
4	1.5266e-12	2.2718e-10



Future works

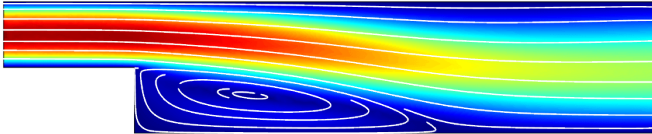
Future works

- serendipity on faces



Future works

- serendipity on faces
- non static case



Future works

- serendipity on faces
- non static case
- coupling with other PDEs

